

Aglron[®] Mt. Pleasant

THURSDAY, DECEMBER 7, 2017 | 10AM

NEW FACILITY! NEW LOCATION!!

Located at the Steffes Group Facility, 2023 235th Street, Mt. Pleasant

AUCTIONEER'S NOTE: We are excited to have our Aglron event at our new auction facility. Come join us as we will run multiple rings with live online bidding available on major equipment. There will be no loading assistance until 2:00PM on sale day. Cars and pickups may enter grounds at 12:00 Noon for self-loading. Registration, terms, and details at SteffesGroup.com. Equipment removal by Friday, December 15, 2017, unless other arrangements are made. Hauling and loading are available. Contact auctioneers for owner information, new consignments, or changes at 319.385.2000

Complete Lot Listings and Photos at SteffesGroup.com



**From Myers Construction
Justin Myers 319-209-0429**

CONCRETE EQUIPMENT

Pioneer 6" Vac Assist Pump Deutz 75 hp motor (Model F42914), portable, pintle hitch, w/ inlet hoses & discharge attachments
Genie Z45/25 articulating boom lift, 3,600 hrs., 6' basket, Ford engine LRG-EFI, gas/LP, 14-17.5 foam filled tires, S/N 15049
2013 Kubota 900 XT RTV, 488 hrs., 4x4, hydraulic dump, power steering ROPS, brush guard
Millennium 20'+5' dovetail, deck over trailer, dual tandem axle, (2) 10,000 lbs. axles, fold down ramps, Engage brake away system, pintle hitch
20' tilt bed trailer, tandem axle, 16' tilt bed, 4' stationary, (2) 7,000 lb axles, 2 5/16" ball
Wacker 420, 341 hrs., self-propelled roller, 36", smooth drum, ROPS
Wacker WP 1550, plate compactor
Whiteman riding power trowel, 1,149 hrs., diesel, hydro.
Wacker 48" power trowel, Honda 8hp
Terex concrete buggy, self-propelled, hyd. dump
Soff Cut GX 3000, 2,312 hrs. walk behind concrete saw, electric start.
Target Porta Cut 404 walk behind concrete saw
Soff Cut X150 concrete saw, 4.5 hp
 (30") 7" Paving forms
 Hyd. concrete curb roller w/ extra drum

4WD TRACTORS

2014 John Deere 9410R, 907 hrs., powershift, deluxe cab, active ride seat, 4 hyd., BB, diff lock, power mirrors, deceleration button, guidance ready, (2) 365#, (6) 450#, and (2) 1375# rear wheel weights, (2) 1375# front wheel weights, Firestone 710/70R42 front and rear duals, S/N 1RW9410RTEP011548
1992 John Deere 8960, 14,000 hrs., powershift, 4 hyd., BB, Cummins diesel, Goodyear 20.8R42 front & rear duals, S/N RW8960P004320

MFWD TRACTORS

2006 New Holland TG210, 2,670 hrs., powershift, 3 pt., Lrg. 1000 PTO, super steer, guidance ready, 12 front weights, 480/80R46 rear duals, 380/85R34 fronts, S/N IAW138748
2006 John Deere 5325, 1,300 hrs., 12 spd. w/ power reverser, open station w/ canopy, 2 hyd., 3 pt., 540 PTO, mid-mount couplers, joy stick controls, loader mounts(no loader), diff. lock, 16.9-30 rears, 11.2-24 fronts
1997 John Deere 6200L, 6,252 hrs., diesel, partial powershift w/ reverser, open station, 2 hyd., 3 pt., 540/1000 PTO, sells w/ JD 640 loader, joystick controls, mid mount couplers, aux. front hyd. quick tach, 7' bucket, ROP, 18.4-30 rears, 12.4-24 fronts, S/N XL06200V153477
Massey Ferguson 6280, cab, Radio, A/C, 3 hyd., 3 pt., 18.4x38 rears, 14.9x28 fronts, (PTO shaft is broken off)
Massey Ferguson 3140, 9,831 hrs., Autotronic trans., cab (missing door), 2 hyd., 3 pt. (no top link), 540 PTO, 480/80R38 rears, 13.6R28 fronts

2WD TRACTORS

1967 John Deere 3020, 7,517 hrs., powershift, gas, open station, 1 hyd., 3 pt., (no top link) 540/1000 PTO, WF, 18.4-38 rears, 6.00-16 fronts, S/N 098764R
Case 730, dual range trans.

ANTIQUE TRACTORS

Case DC, 2 hyd., 540 PTO, Eagle hitch, w/ loader, (does not run)
Oliver 70, dual exhaust, steel spoke rear rims
Massey 22, (does not run)

COMBINES

2015 CASE-IH 5140 AFS, 181 sep, 251 eng. hrs., PRWD, Field Tracker, rock trap, single point, 2 speed feeder house, chopper, spreader, Y&M, Pro 700 monitor, guidance ready, power hopper extensions, 30.5L-32 fronts, 480/70R30 rears, S/N YFG012886
2013 CASE-IH 8230 AFS, 900 sep, 1,200 eng. hrs., PRWD, lux cab., red leather, Field Tracker, rock trap, single point, variable speed feeder house, chopper, spreader, Y&M, Pro700 monitor, guidance ready, HID lighting, power mirrors, power hopper extensions, 36" tracks, 750/65R26 rear tires, S/N YDG220488
2011 CASE-IH 8120 AFS, 1,161 sep, 1,618 eng. hrs, PRWD, Field Tracker, rock trap, single point, variable speed feeder house, chopper, spreader, Y&M, Pro 600 monitor, guidance ready, power hopper extensions, 520/85R42 front duals, 28L-26 rears, S/N YBG212786
2012 John Deere S670, 1,083 sep, 1,660 eng. hrs., PRWD, chopper, spreader, Y&M, contour master, rock trap, hopper extensions, power tail board, guidance ready, 900/65R32 front floater tires, 28L-26 rears, S/N 1H0S670SEC0746898
2001 John Deere 9550, 2,030 sep, 3,035 eng. hrs., PRWD, straw walker, contour master, chopper, spreader, hopper extensions, variable speed feeder house, 17' unload auger, 2 spd. hydrostat, 30.5-32 fronts, 18.4-26 rears, S/N H09550W690979
1999 John Deere 9510 Maximizer, 2,384 sep., 3,349 eng. hrs., 2wd, chaff spreader, Maurer hopper extensions, Y&M, Green Star brown box with mapping, 30.5-32 tires, S/N 09510X681218
1990 John Deere 9500, 3,044 sep, 4,275 eng. hrs., 2wd, walker, chopper, 30.5L-32 fronts, 14.9-24 rears, S/N H09500X637894

DRAPER HEAD

2014 CASE-IH 3162 flex draper head, hyd. fore/aft, 35', single point, w/ hyd. fold down slow speed transport, approx. 300 acres on head, S/N YEH040825 (NEW-DEMO UNIT) (FACTORY WARRANTY)

GRAIN PLATFORM

2002 John Deere 922 Flex, 22', poly fingers, low rock dam, S/N 800H00922F695858

CORN HEADS

2009 CASE-IH 3412, 12x30", hyd. deck plates, head height, S/N Y9S019171
1998 John Deere 693, 6x30", hyd. deck plates, poly, S/N H00693X676446

HEAD CART

J&M head cart, 24'

DOZER, EXCAVATOR & SKID STEER

2001 Komatsu D65EX-12 dozer, 11,629 hrs., powershift, 190 hp, cab, 24" pads, semi-U blade, heat, A/C, new under carriage, S/N 63255
Caterpillar D6D dozer, 11,148 hrs., cab, 10' blade w/ tilt, 24" pads, heat & A/C, S/N 4X08481
Caterpillar D5 dozer, 6,000 hrs., 10' blade w/ tilt, 20" pads, ROPS, sweeps
2007 Caterpillar 308C-CR, excavator, 4,998 hrs., cab w/ heat & A/C, front push blade, 24" bucket, long stick, 16" composite tracks
2005 John Deere 160 CLC, excavator, 8,943 hrs., (100 hrs. on JD remanufactured engine, NEW injector pump, NEW injectors), cab, heat, A/C, lights, aux. hyd., 28" pads, NEW 42" bucket, quick attach, 33,000# machine, S/N FF160CX045339
2008 Bobcat S175, 2,616 hrs., 72" bucket, Power Bob-Tach, selectable joystick, auxiliary hydraulics, A/C, S/N A3L520344

NEW SKIDSTEER ATTACHMENTS

Lowe 750, hyd. auger, w/ 12" bit
Stout 66-9, brush grapple
Stout 72-8, brush grapple
Stout XHD 84-6, brush grapple
Stout 72-3, rock bucket grapple
Stout 72, material bucket
Stout, pallet fork combo, w/ removable grapple
Stout, 48" walk through pallet forks
Stout, tree & post puller
Stout, bale spear-round
Brute, rock bucket, 68", 4" tine spacing
Brute, rock bucket, 75", 4" tine spacing
Brute, rock bucket, 80", 4" tine spacing
Brute, rock bucket, 84", 4" tine spacing
Brute, skeleton grapple, 68", 4" tine spacing
Brute, skeleton grapple, 75", 4" tine spacing
Brute, skeleton grapple, 80", 4" tine spacing
Brute, skeleton grapple, 84", 4" tine spacing
Brute, root grapple, 70", 8" tine spacing
Brute, root grapple, 80", 8" tine spacing
Brute, tine grapple, 62", 10" tine spacing
Brute, tine grapple, 72", 10" tine spacing
Brute, tine grapple, 82", 10" tine spacing
Brute, log solo grapple
Brute, tree puller
Brute, brush mower, 72", w/ push bar
(2) Brute, receiver hitches, 2"
(2) Brute, pallet fork extensions, 7"
(4) Universal quick attach plates
(8) HD snow pusher, 93"
(8) Skid steer attach frames
(3) Fork extensions 84", light duty
(3) Fork extensions 72", light duty
(2) Skid steer root rake
(2) Earth Beaver, Rock, Slab, Stump Remover
Maxam, 12-16.5 Skid Steer Tire, 12-ply
CAT loader bucket, dual cylinders (used)

NEW HOPPERS

(2) 2 cu. yd. self dumping hopper standard duty, 4,000 lb. capacity
(2) 1.5 cu. yd. stackable self dumping hopper standard duty, 4,000 lb. capacity
1 cu. yd. stackable self dumping hopper standard duty, 4,000 lb. capacity
(2) 2 cu. yd. trash hopper mounts to skid steer
1.5 cu. yd. trash hopper mounts to skid steer

PLANTERS

John Deere 1760, Conservation MaxEmerge 2, 12x30", front fold, VacuMeter, HD spring pressure, markers, sells w/ Precision Hydraulic Drive, 20/20 row flow, 3 weight bars, wave, E-sets, 20/20 Seed Sense
2004 Case IH 1200 Planter, 16R30", pivot transport, liquid fertilizer, trash whips, markers, S/N CJB022959
John Deere 7200, 6x30", pull type, trash wheels, NT coulters, insecticide, markers, vacuum
John Deere 7000, 8x36", no-till, trash whippers, Kelderman fold

DRILLS

John Deere 750 no-till drill, Remlinger bin extension, 15', with grass seed, rolling basket
IH 5400 no-till drill, 15', on Yeller cart

TILLAGE

2008 McFarlane RD 4030RB, reel disk, 30', wing fold, rolling basket, S/N 12730
Unverferth 112, disc ripper, 9 shank, pull type on cart, wing fold, NT coulters
John Deere 510, disc ripper, 5 shank
John Deere 26' field cultivator, pull type, wing fold
Sukup 9400 row crop cultivator, 12x30" 3 pt., 18" sweeps, wing fold, high residue, adj. down pressure, 3pt. hyd. guidance, S/N 04016

GRAVITY WAGON & GRAIN CARTS

2016 Parker 605 gravity flow, fenders, lights, work light, cushion brakes, extendable tongue, 445/65R22.5 tires, (NEW-NEVER SOLD) (FACTORY WARRANTY)
J&M 875 grain cart, corner dump, roll tarp, 1000 PTO, hydro, 900/60R32 tires, S/N 2906
Brent 640 grain cart, lights, brakes, 425/65R225 tires
J&M 400 grain cart, lights, 16.5L-16.1 tires
Killbros gravity flow, 250 bu., on JD gear, 11L-15 tires
Bush Hog Stan-Hoist barge box on Stan-Hoist gear

SPREADERS

New Leader 1610 fertilizer tender bed, auger, pump & hoses
New Holland 185 manure spreader, 540 PTO, S/N 859843

HAY EQUIPMENT

2009 Massey Ferguson/Hesston 2756A round baler, 5x6, net wrap, 6,727 bales, kicker, inoculate system, monitor, S/N HU25124
Vermeer 605XL round baler, shows 508 bales, with Accu-Bale, S/N 1VR141M911000215
John Deere 336, small square baler
2010 Massey Ferguson 1330 disc mower, S/N HU32126
Land Pride RCF2072 rotary cutter, 540 PTO, 6", 3 pt., laminated tire, quick tach ready, S/N 717480
Kuhn SR 112 Gil SpeedRake hay rake, SN B1509
Gnuse bale trailer single axle, 10R17.5 tires
 Hayrack on JD gear
 Hayrack on Westendorf gear

FEED CART & SILAGE WAGON

Schuler 220BF Feed Cart, 540 PTO, 9,00R20 tires, S/N 11A3609576
Badger silage wagon, 540 PTO, on Westendorf running gear, 12.5x15 tires, S/N 14-11606

LIVESTOCK EQUIPMENT

(20) 30x90 cattle & calf feeder
18 Ton bulk bin

NEW FENCING

(100) 20' 6 bar continuous fence panels with clips & connectors
(40) 12' interlocking corral panels
(25) 24' heavy duty panels w/ chains
(4) Horse gate

SEMI TRUCKS & TRAILERS

2003 Sterling Acterra, 302,523 miles, 3,976 hrs., day cab, single axle rear end, 7.2 Liter (300 hp) Cat 3126 diesel, 7 spd., air ride, air brakes, 11R22.5 tires, (6) aluminum wheels, VIN 2FWBYYAK03AK33080
2003 Sterling Acterra, 324,310 miles, 6,095 hrs., day cab, single axle rear end, 7.2 Liter (300 hp) Cat 3126 diesel, 7 spd., air ride, air brakes, 11R22.5 tires, (6) aluminum wheels, VIN 2FWBYYAK03AK33080 (cracked windshield)
2003 Sterling Acterra, 403,561 miles, 15,328 hrs., day cab, single axle rear end, 7.2 Liter (300 hp) Cat 3126 diesel, 7 spd., air ride, air brakes, 11R22.5 tires, (6) aluminum wheels, VIN 2FWBYYAK83AK83354
2003 Sterling Acterra, 436,413 miles, 16,128 hrs., day cab, single axle rear end, 7.2 Liter (300 hp) Cat 3126 diesel, 7 spd., air ride, air brakes, 11R22.5 tires, (6) aluminum wheels, VIN 2FWBYYAK43AK83352
2001 Sterling Acterra, 223,760 miles, 2,617 hrs., day cab, single axle rear end, 7.2 Liter (300 hp) Cat 3126 diesel, 7 spd., air ride, air brakes, 11R22.5 tires, (6) aluminum wheels, VIN 2FWBYYAKX1AJ94396
2001 Sterling Acterra, 279,355 miles, 3,805 hrs., day cab, single axle rear end, 7.2 Liter (300 hp) Cat 3126 diesel, 7 spd., air ride, air brakes, 11R22.5 tires, (6) aluminum wheels, VIN 2FWBYYAK81AH92215
1991 Freightliner FLD120, 10 spd Eaton Fuller, showing 278,871 miles, day cab, wet kit, air slide 5th wheel, 12,000# front axle, 285/75R24.5 fronts, 11R24.5 rears, (10) aluminum wheels, VIN 1FUJYDXYB4MP502215

PICKUP & TRAILERS

1998 Ford F150 XL 164,612 miles, 4WD, ext. cab, 4.6L V8, automatic, (equipped for a snow blade)
PJ trailer, gooseneck, 20', steel deck, 24,000# axle duals GVWR, (2) 12,000# axles w/ hutch suspension, brakes, lights, tandem
(2) Steel I-Beam trailers, 12"x56" beams, (5) 6 ton axles, 8.00x14.5 tires, 2 5/16" ball hitch, (NO PAPERWORK)

UTV & MOWER

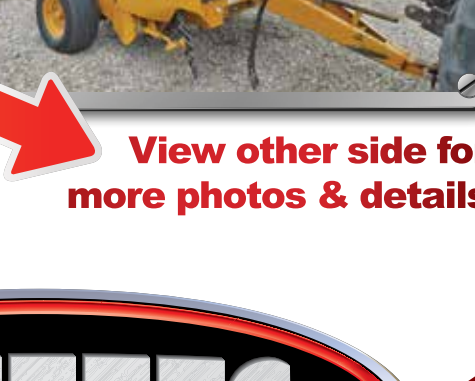
2007 John Deere Gator 850D, 790 hrs., 4x4, ROPS, diff. lock, hyd. dump bed, front & rear receiver hitch, headache rack, S/N MOXUVDX011888
Cub Cadet 86, riding mower, mid-mount deck, 48" cut, 8 hp Kohler, gas, front mount snow blade, manual lift, manual angle
 Weed sprayer fits ATV/UTV
Broadcast, spreader/seeder fits receiver hitch

EQUIPMENT & PARTS

John Deere 45 blade, 6', 3 pt., S/N W00045X030841
Continental post hole digger, 3 pt., 540 PTO, 12" auger bit
Gnuse, 3pt. bale forks
 John Deere 40 Series rear fenders
 Rear wheel weights
John Blue, liquid fertilizer pump/attachments fits planter
(6) Mobile home axles, w/ brakes, 6 ton, 8.00x14.5 tires
(3) Mobile home trailer hitches, 2 5/16" ball
(4) 425/65R22.5 tires on 8 bolt implement wheels (NEW)
(2) 500 gal. LP tanks
 1000 Gal. LP Tank
Kneer gas motor; **Wisconsin** gas motor; **Kohler** gas motor; **Maytag** gas motor

SHOP EQUIPMENT

100 Ton Air/Hyd Press w/attachments, (NEW);
(4) Heavy Duty 30x57 welding tables w/ shelf, (NEW);
(8) 29x90 work benches, (NEW);
 Campbell Hausfeld air compressor; Excell gas powered pressure washer, 2,700 PSI; Welder; Chop saw; Bench grinder; 3/4" drive socket set; 4" disc grinder; 7" disc grinder; NEW 3/8 AR500 shooting targets to include deer, coyote, dueling target, spinner & gong targets;
(4) weather guard tool boxes



View other side for more photos & details

ONLINE BIDDING AT SteffesGroup.com



TERMS: All items sold as is where is. Payment of cash or check must be made sale day before removal of items. Statements made auction day take precedence over all advertising. \$35 documentation fee applies to all titled vehicles. Titles will be mailed. IA Sales Tax laws apply. Canadian buyers need a bank letter of credit to facility border transfer.

PLEASE NOTE: There will be no loading assistance until 2pm on sale day. Cars and pickups may enter grounds at 12 Noon for self loading.

Agtron[®] Mt. Pleasant

NEW FACILITY! NEW LOCATION!!
 Located at the Steffes Group Facility, 2023 235th Street, Mt. Pleasant

THURSDAY, DECEMBER 7, 2017 | 10AM

ATTENTION

CONSIGNMENTS ACCEPTED ON:

Mon., November 20th – Wed., November 22nd, 8am-5pm

NO CONSIGNMENTS TAKEN

Thurs., November 23rd – Sun., November 26th

Mon., November 27th – Friday, Dec. 1st, 8am-5pm

CONSIGNMENTS ON THE LOT BY FRIDAY, DECEMBER 1ST, 5PM

LOAD OUT SCHEDULE:

All items to be removed within 7 days.
 Load out assistance after auction are: Friday, Dec. 8th, 8am-5pm,
 Mon., December 11th – Thurs., December 14th, 8-5 pm
**ALL other load out times are by appointment only,
 PLEASE CALL OFFICE TO SCHEDULE!**

View other side for more photos and descriptions!



PRESORTED
 STANDARD
 US POSTAGE
 PAID
 Permit #315
 FARGO, ND



Steffes Group, Inc.
 605 East Winfield Avenue
 Mt. Pleasant, IA 52641

Agtron[®] Events

West Fargo, ND
 Wed., November 29 @ 10AM

Sioux Falls, SD
 Tues., December 5 @ 10AM

Mt. Pleasant, IA
 Thurs., December 7 @ 10AM

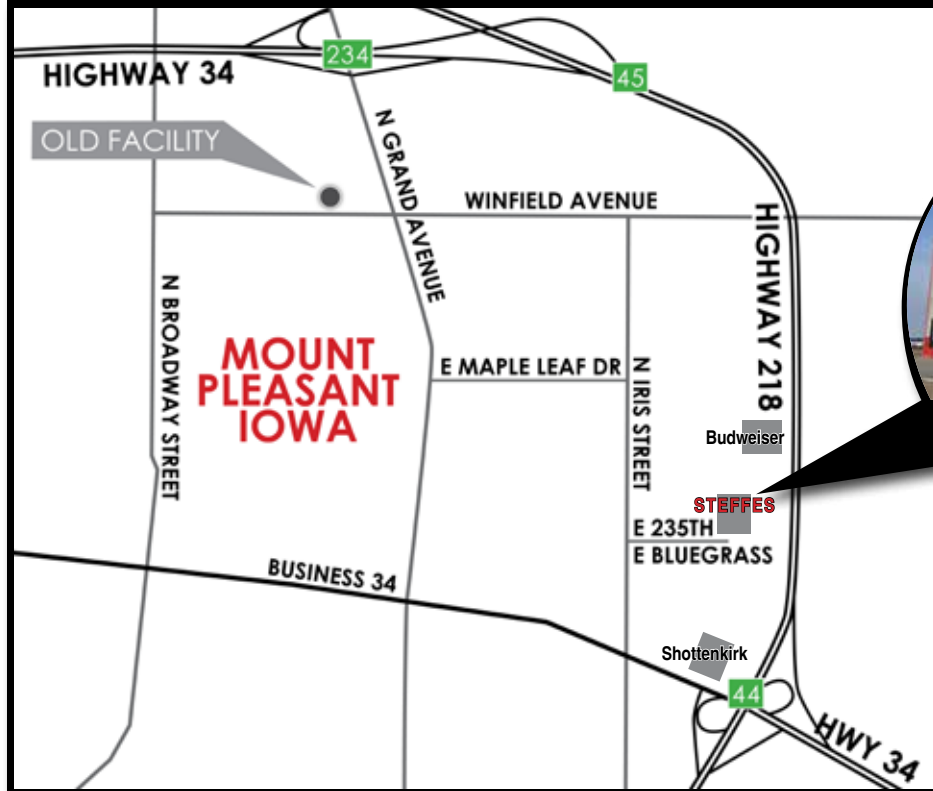
Litchfield, MN
 Thurs., December 21 @ 10AM

Selling Land & the Equipment to Farm it



Complete lot listings, photos, & details at SteffesGroup.com
THUR, DEC. 7, 2017 | 10AM
Mt. Pleasant
Agtron

NEW LOCATION



ONLINE BIDDING



NEW FACILITY

Located at the New Steffes Group Facility, 2023 235th Street, Mt. Pleasant, Iowa

Complete Lot Listings and Photos at SteffesGroup.com